

March 10, 2015

Volume 11

🔭 - 30 DAY OUTLOOK

The 30 Day Outlook for construction activities is:

- Continue installing new storm sewers
- Complete sidewalk along Veterans Boulevard north of Pacific Street
- Complete the “switch-back” handicapped accessible sidewalk ramp along Pacific Street
- Electrical conduits being installed for street lights

LIBERTY PLAZA

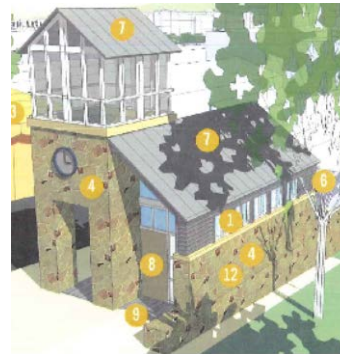
Also known as “Phase 2”

The engineering firm, CMT, along with their architectural specialists, RATIO, have started working on the Phase 2 project design. This phase of the project is generally the area of the old City Hall parking lot along the east side of Veterans Boulevard between Pacific and College Streets. The improvements are more than simply an improved parking area but will act as a focal point for the downtown area. This work has four important components: (1) The primary plaza area (2) parking that can be flexible for other uses (3) a trolley stop and restroom facility and (4) a new and improved access to the Branson Christian Church. The plaza area, referred to as Liberty Plaza, will include trees and landscaping, comfortable seating, decorative walls & grounds and some artistic elements. This attractive area will provide a pleasant location for visitors and employees to relax downtown. In addition, there will be provisions for performances and other entertainment options. The consulting firms are now evaluating ways to incorporate a tribute to the history of downtown Branson and also integrate attractive natural elements onto the design. The goal is to have the preliminary design plans done in June 2015 with construction scheduled to start in January 2016.

CONTACT INFORMATION

If you have any questions or concerns, please contact City Engineer, David Miller at 417-337-8559.

TROLLEY STOP & RESTROOM



Southwest Corner

The Liberty Plaza area in the Phase 2 project includes a new trolley stop and restroom facility. The artists renderings of the buildings indicate the stone veneer on the exterior walls. The goal was to create a structure that blends well with the historic character of downtown. The “tower” at the end of the building is designed to allow natural light to better fill the space – it is designed to enhance the appearance and there will not be any access to the upper windows. The roof will be standing-seam metal roof. The ends of the restroom are glass with the lower areas being opaque and the upper areas are clear to allow more natural lighting.



Eastern Side

The trolley stop will be the covered area along the north half of the building. There will be provisions for the display of information and guidance for visitors. The restrooms will include heating and air conditioning for year-round use. Although the fixtures must be constructed of vandal resistant materials, the architects are looking at ways to enhance the appearance of the typically stark public facilities.

BUMPY ROAD?

The contractor is required to keep the streets relatively smooth and passable while the underground utilities are being installed. If you observe any areas needing special attention, please contact the Engineering Department at City Hall.

PLEASE NOTE THAT THE PROJECT WEBSITE HAS BEEN UPDATED. ALL NEWSLETTERS, ROAD CLOSINGS,
NEWS RELEASES, ETC. WILL BE POSTED TO WWW.BRANSONSTREETSCAPE.COM